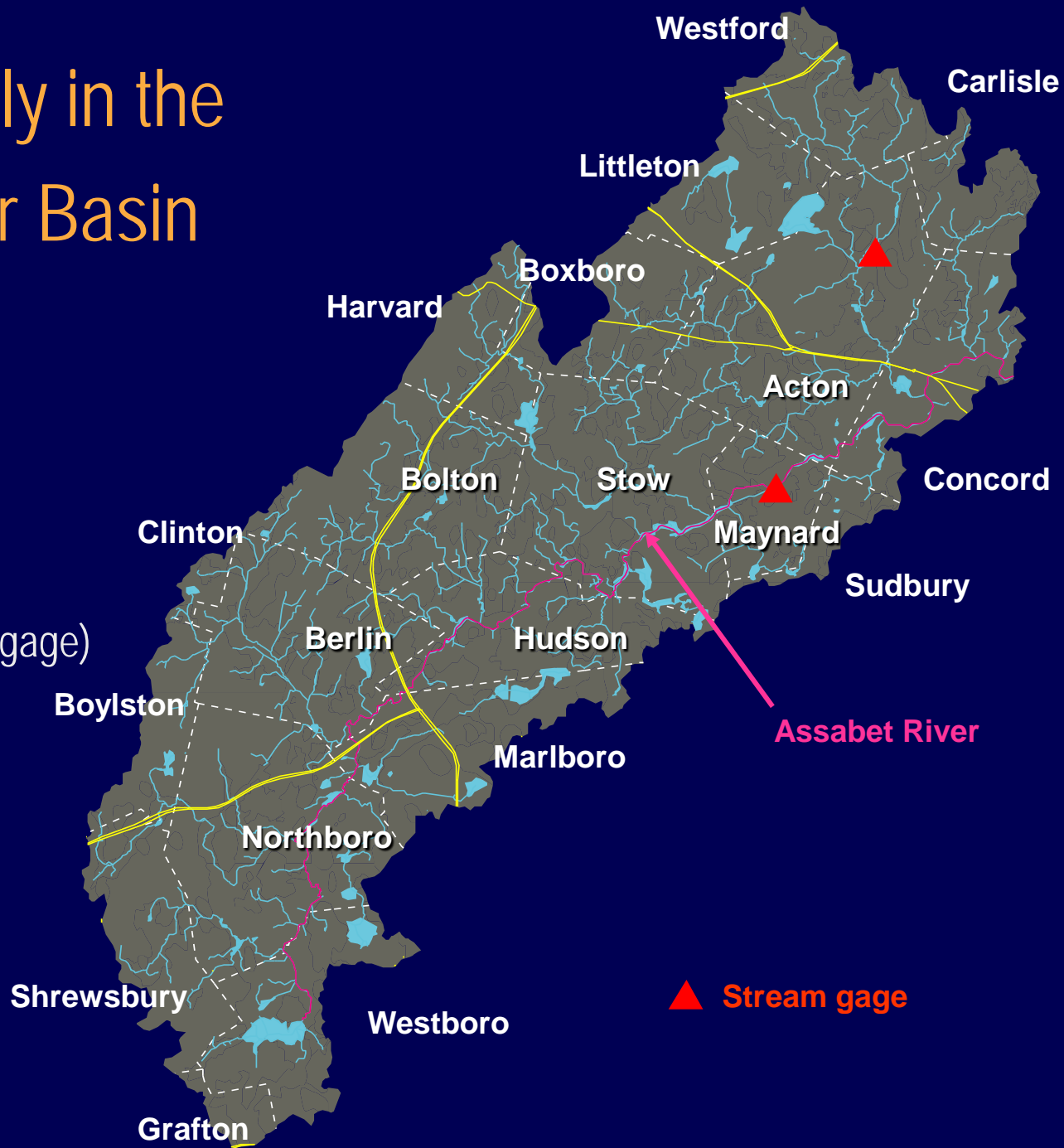


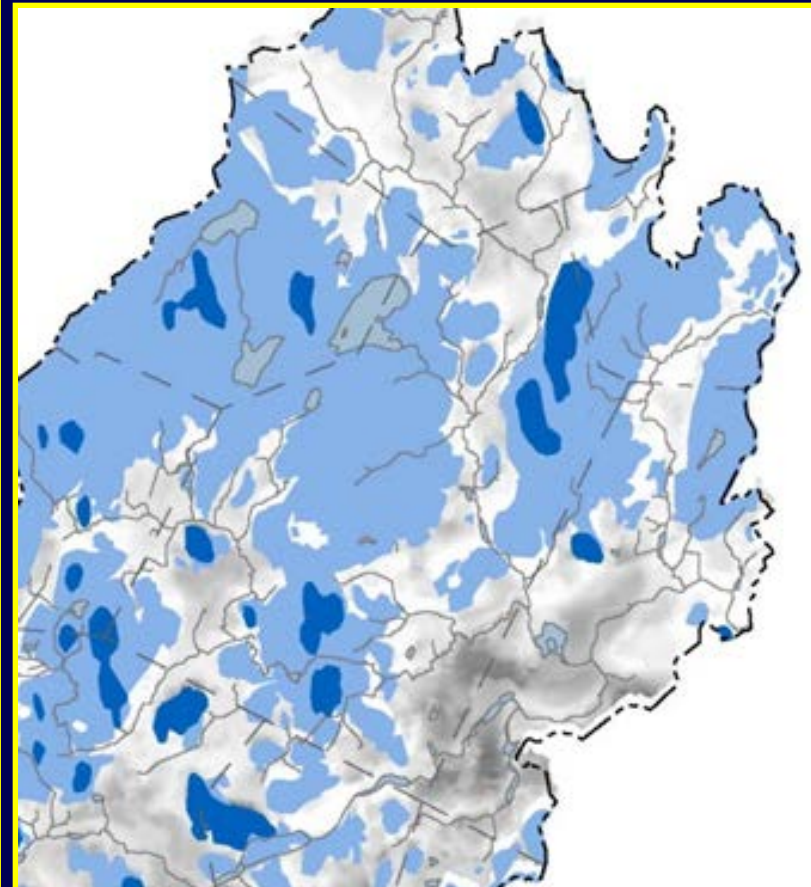
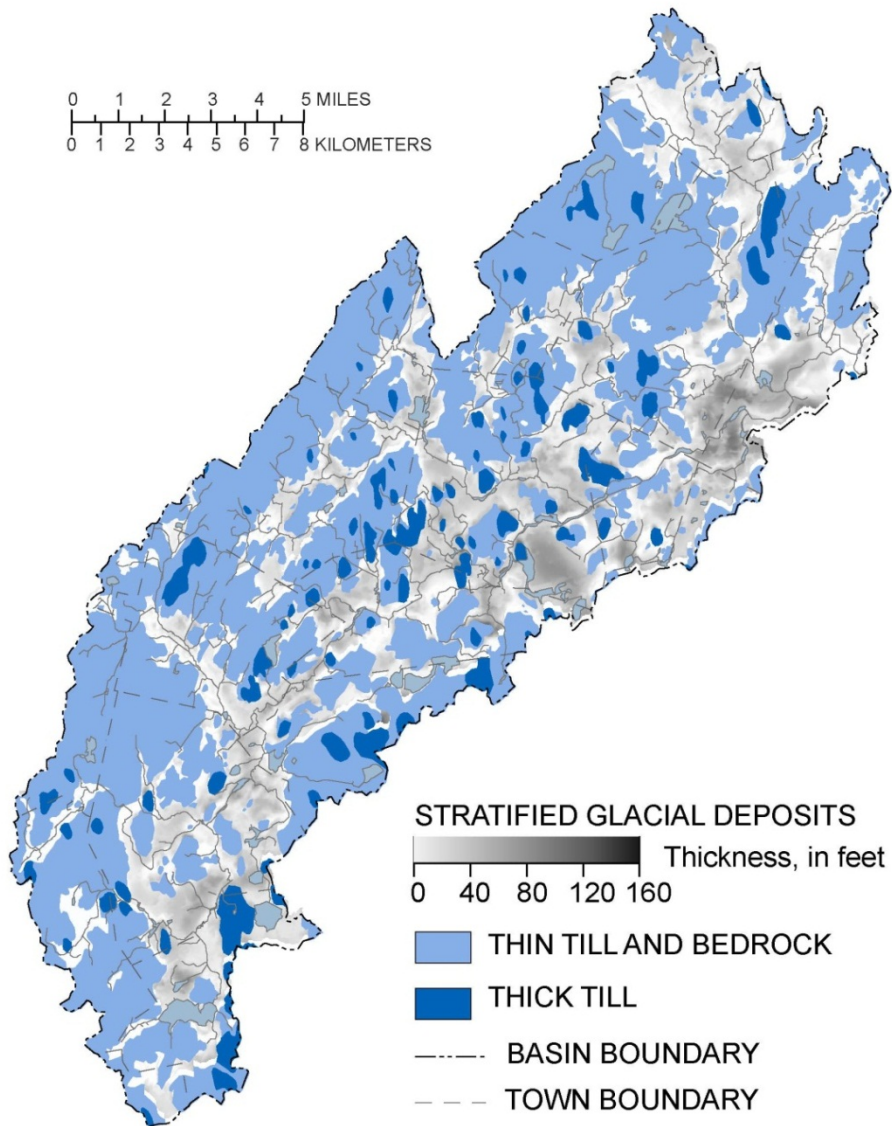
# Acton is entirely in the Assabet River Basin

AREA: 177 mi<sup>2</sup>  
FLOW: 123 Mgal/d  
LENGTH: 31 miles

(Mean flow is for Maynard gage)



# Acton has two types of aquifers

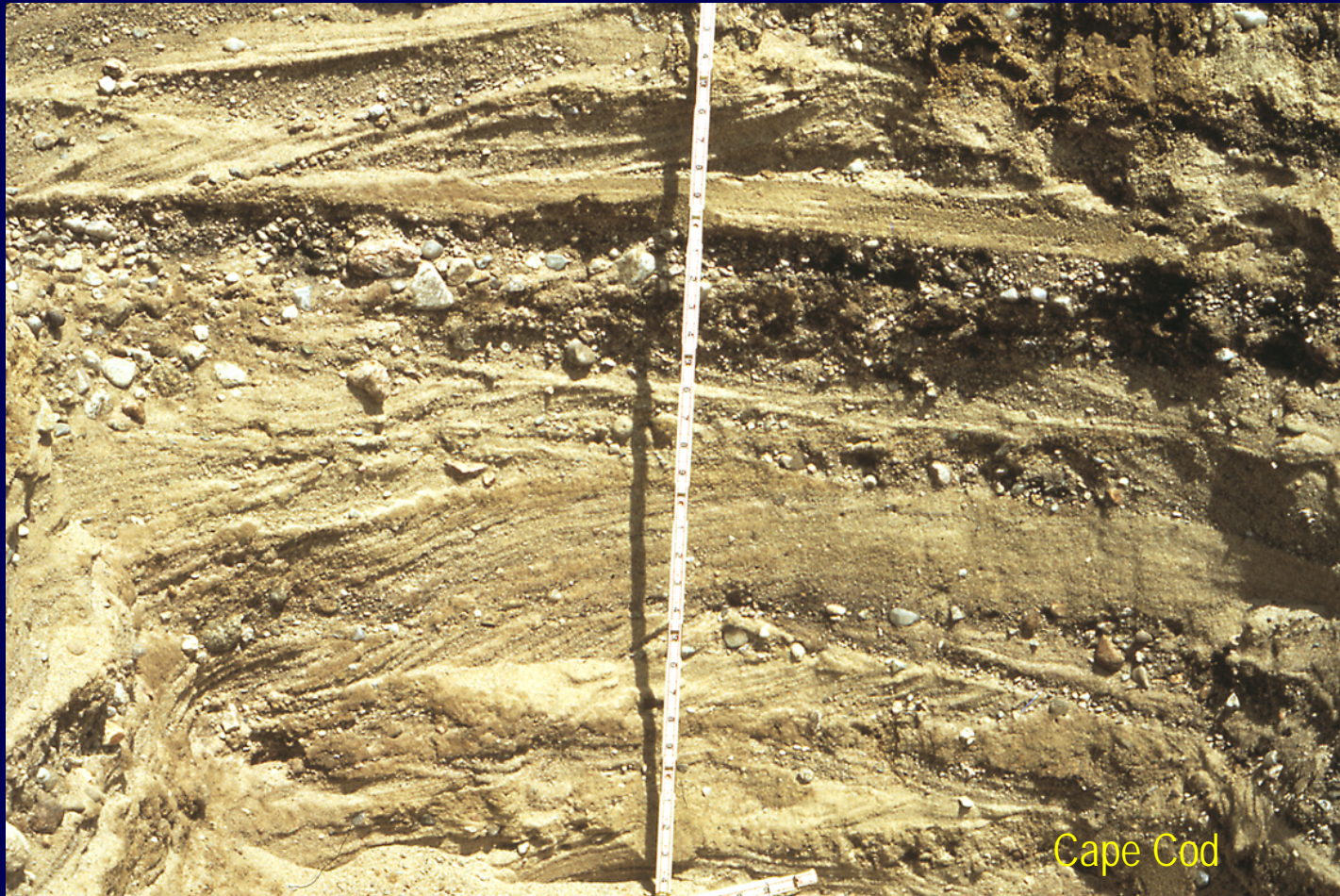


# Fractured-Bedrock Aquifer (tapped mostly by domestic wells)



Route 111 and I-495 interchange)

# Unconsolidated Sand and Gravel Aquifer (tapped by Acton WD wells)



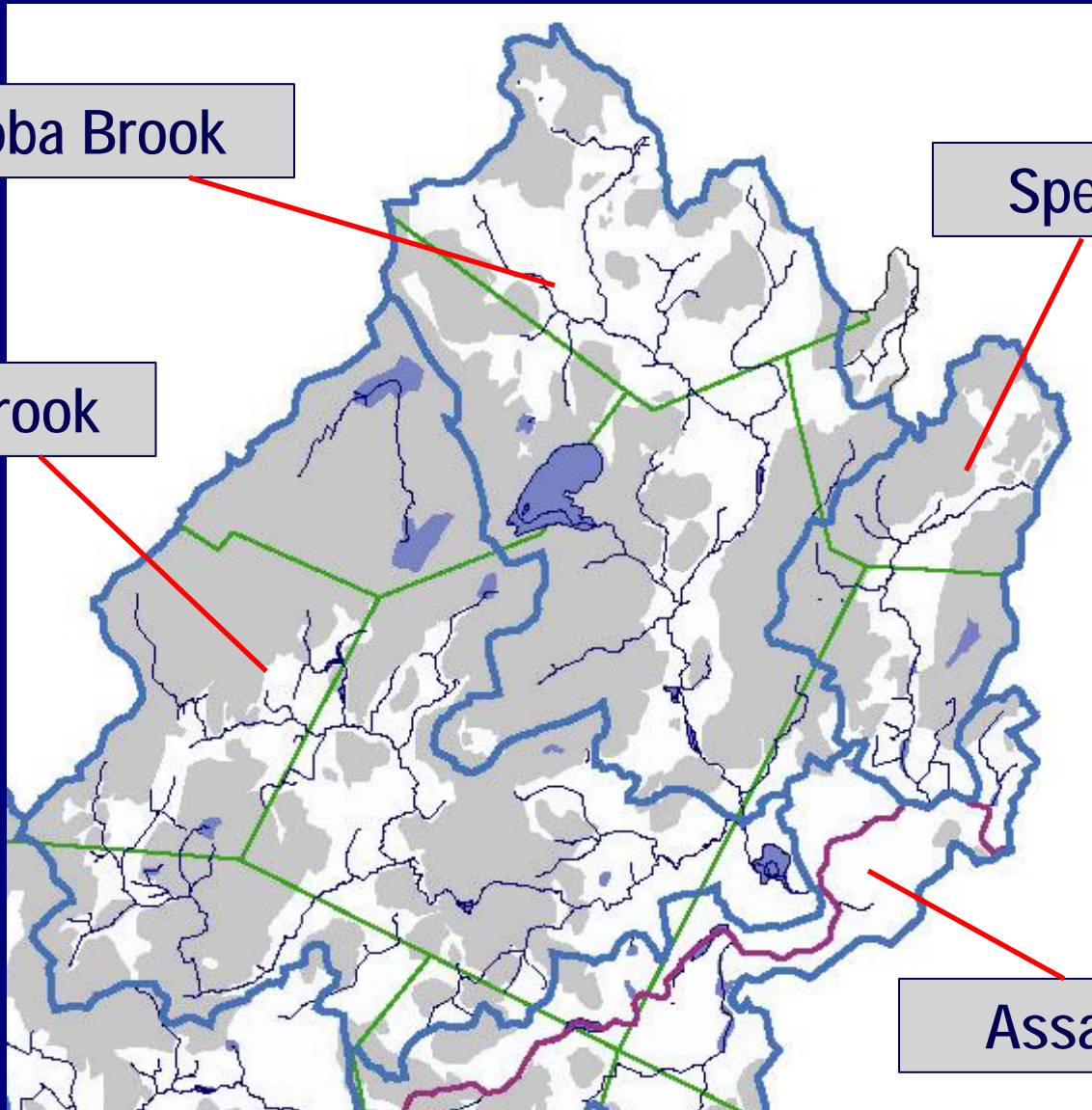
# Acton has four stream sub-basins

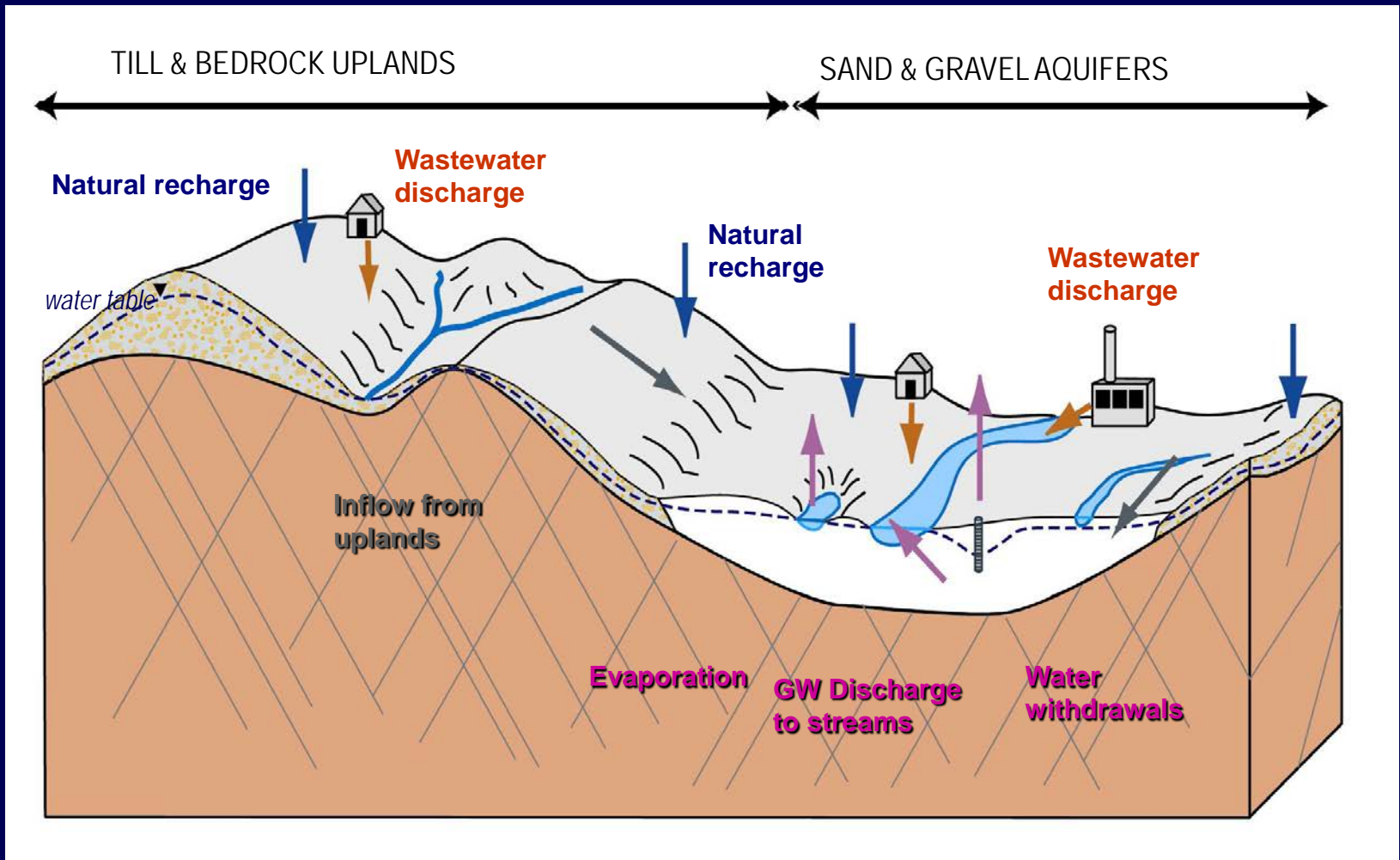
Nashoba Brook

Spenser Brook

Fort Pond Brook

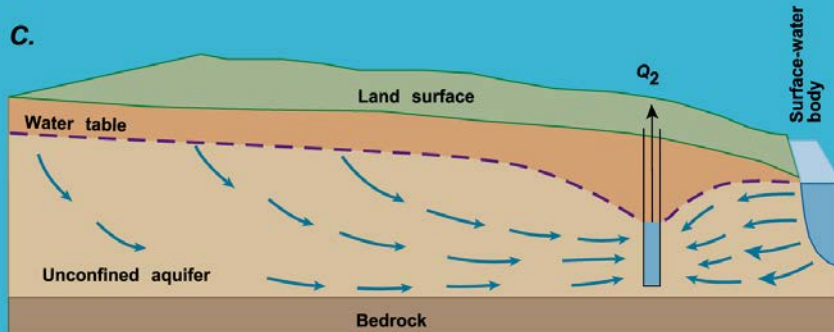
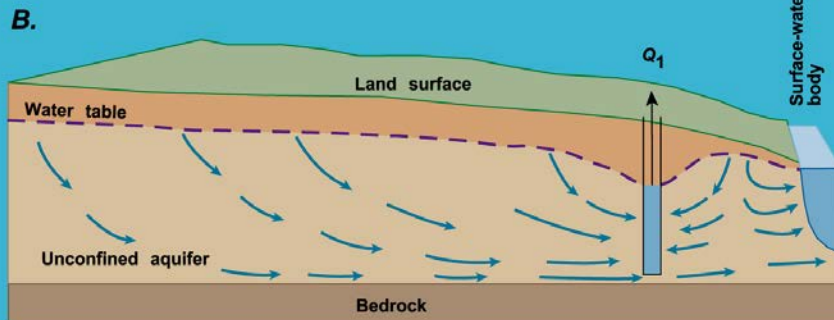
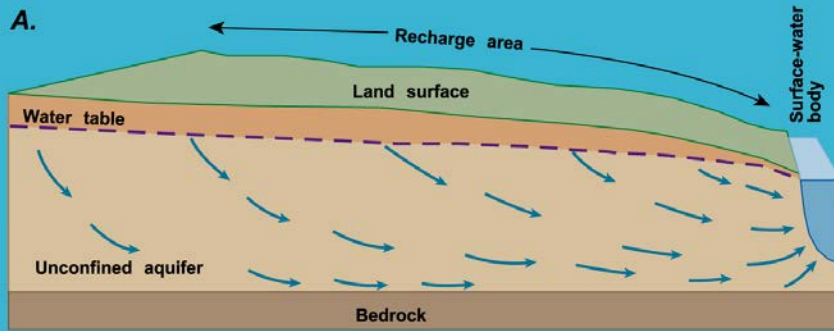
Assabet River



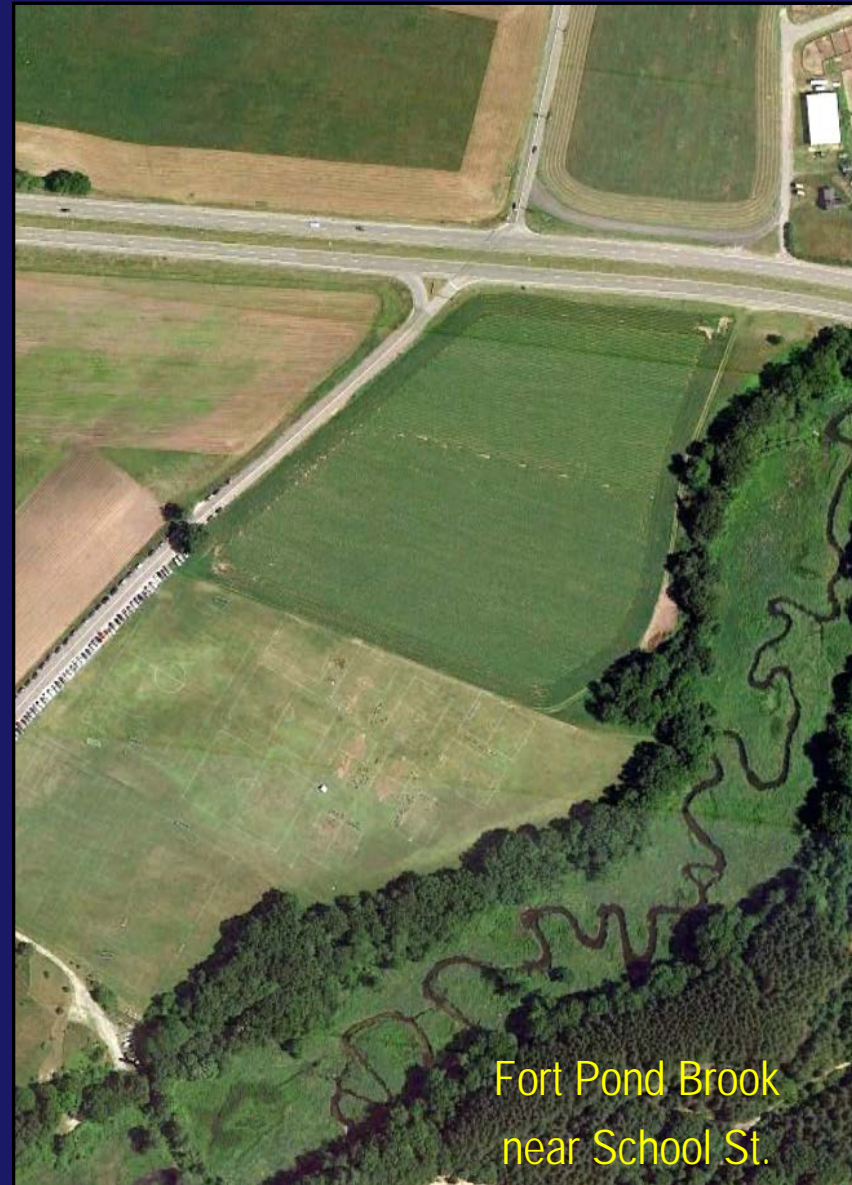


Acton's stream-aquifer system  
is a single resource

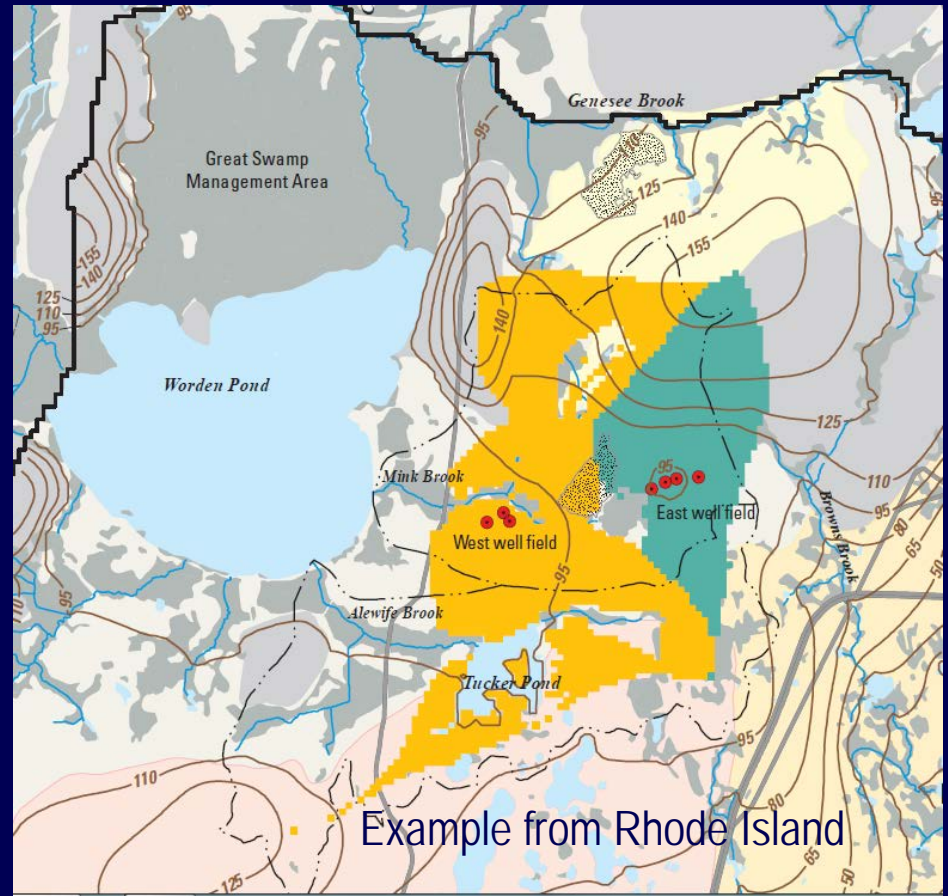
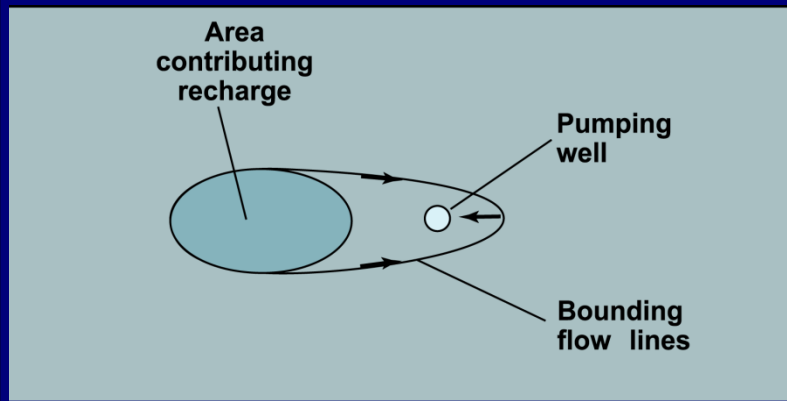
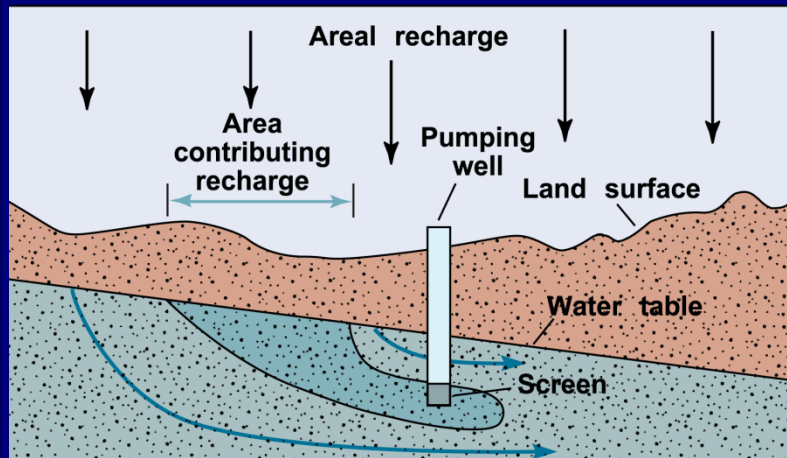
# Sources of water to a supply well



Schematic diagram, not to scale



# Contributing area to a supply well

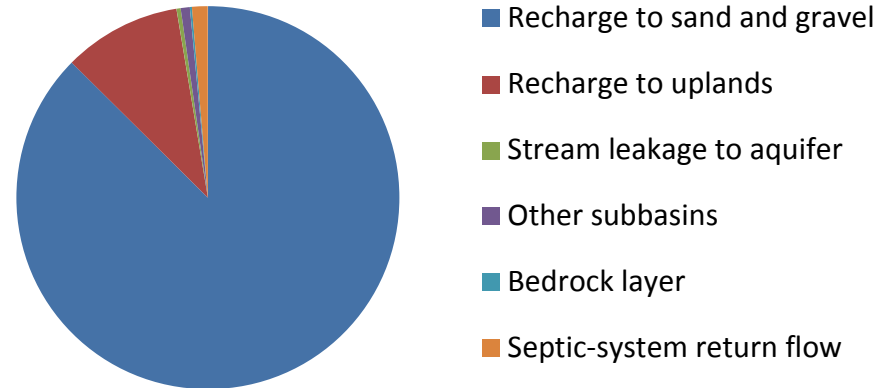


# Water budget for Nashoba Brook basin

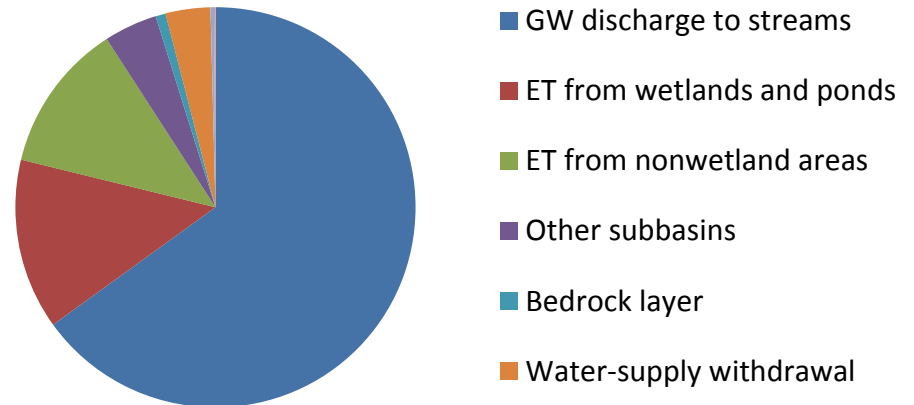


Flow at basin outlet  
is 16.3 Mgal/d

## Groundwater Inflow 25.5 Mgal/d



## Groundwater Outflow 25.5 Mgal/d



Sustainable use of Acton's water resources must balance competing demands for natural recharge



Heath Hen Meadow  
and Fort Pond Brooks  
near Central St.